

WORK LIFE BY VISCOSITY**Extrapolation Template for Work Life Calculation** FROZEN THAWED FRESHDATE: 1/30/2013MATERIAL: 967-1BATCH 042F003950 -RT ORIGINAL RETEST ENGR REQUEST**4 data points minimum**

Point	Date	Time Interval (hr)	Viscosity (cps)	% Increase	Tech.	Comments
1	1/30/13 5:33 AM	0.00	15078	0.0%	HSH	
2	1/30/13 6:54 AM	1.35	15327	1.7%	HSH	
3	1/30/13 7:49 AM	2.27	14995	-0.6%	HSH	
4	1/30/13 8:49 AM	3.27	14913	-1.1%	HSH	
5	1/30/13 9:51 AM	4.30	15990	6.0%	HSH	
6	1/30/13 10:58 AM	5.42	16901	12.1%	HSH	
7	1/30/13 11:49 AM	6.27	16073	6.6%	HSH	
8	1/30/13 12:45 PM	7.20	16735	11.0%	DP	
9	1/30/13 1:34 PM	8.02	16073	6.6%	DP	
10	1/30/13 2:37 PM	9.27	16238	7.7%	DP	

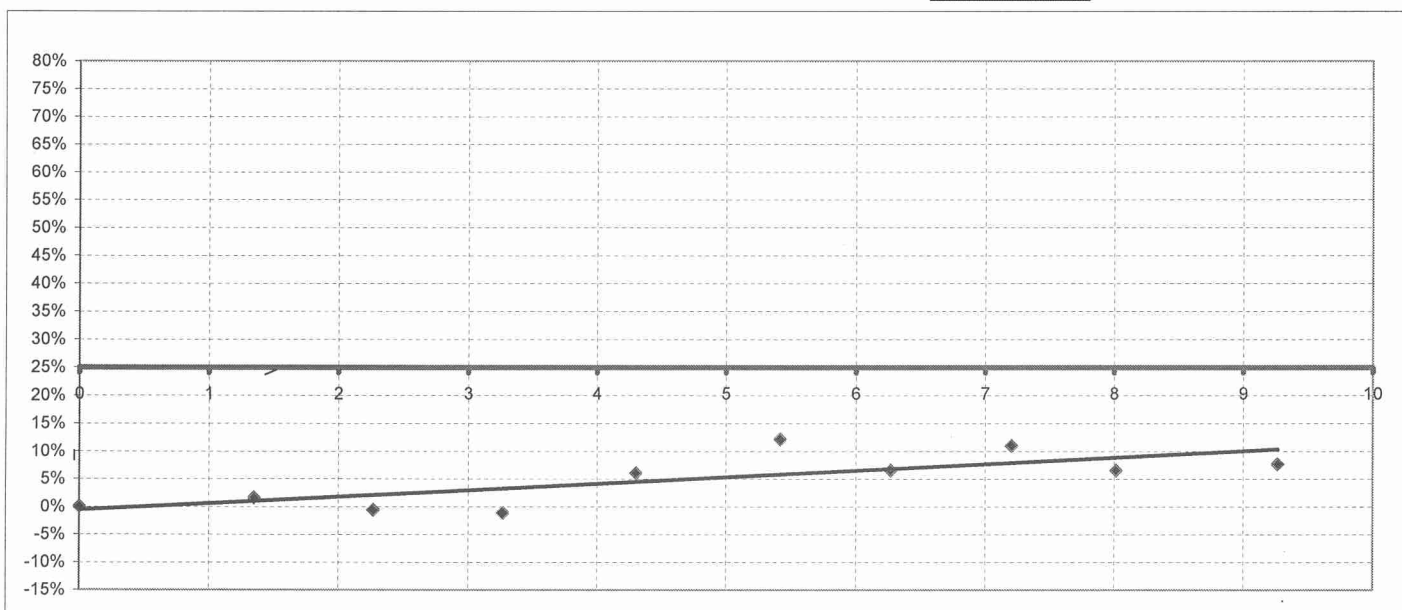
Maximum Viscosity:

18,848

Actual Work Life:

>24 hrs

Target Work Life:

18.6 hrsCompleted by: DP/HSH

**WORK LIFE BY VISCOSITY
TEST REPORT FORM**

Material: 967-1
 Lot #: 042F003950 Room Temp

hr

Date	Time	Viscosity Reading	Viscosity (cps)	RPM
1-3072	INT.	15,078		
	1	15,327		
	2	14,995		
	3	14,913		
	4	15,980		
	5	16,901		
	6	16,073		
	7	16,731		
	8	16,073		
	9	16,238		
	10	18,392		

Tested from: Jar Syringe Syringe Size _____ cc

Completed by: _____

WORK LIFE BY VISCOSITY**Extrapolation Template for Work Life Calculation** FROZEN THAWED FRESHDATE: 1/30/2013MATERIAL: 967-1BATCH 042F003950 +40C ORIGINAL RETEST ENGR REQUEST**4 data points minimum**

Point	Date	Time Interval (hr)	Viscosity (cps)	% Increase	Tech.	Comments
1	1/30/13 5:33 AM	0.00	15078	0.0%	HSH	
2	1/30/13 6:58 AM	1.42	14582	-3.3%	HSH	
3	1/30/13 7:53 AM	2.33	15990	6.0%	HSH	
4	1/30/13 8:53 AM	3.33	16735	11.0%	HSH	
5	1/30/13 9:56 AM	4.38	18558	23.1%	HSH	
6	1/30/13 11:02 AM	5.48	20546	36.3%	HSH	
7	1/30/13 11:53 AM	6.33	20463	35.7%	HSH	
8	1/30/13 12:51 PM	7.30	21458	42.3%	DP	
9	1/30/13 1:45 PM	8.20	24109	59.9%	DP	
10	1/30/13 2:44 PM	9.20	24192	60.4%	DP	

Maximum Viscosity:

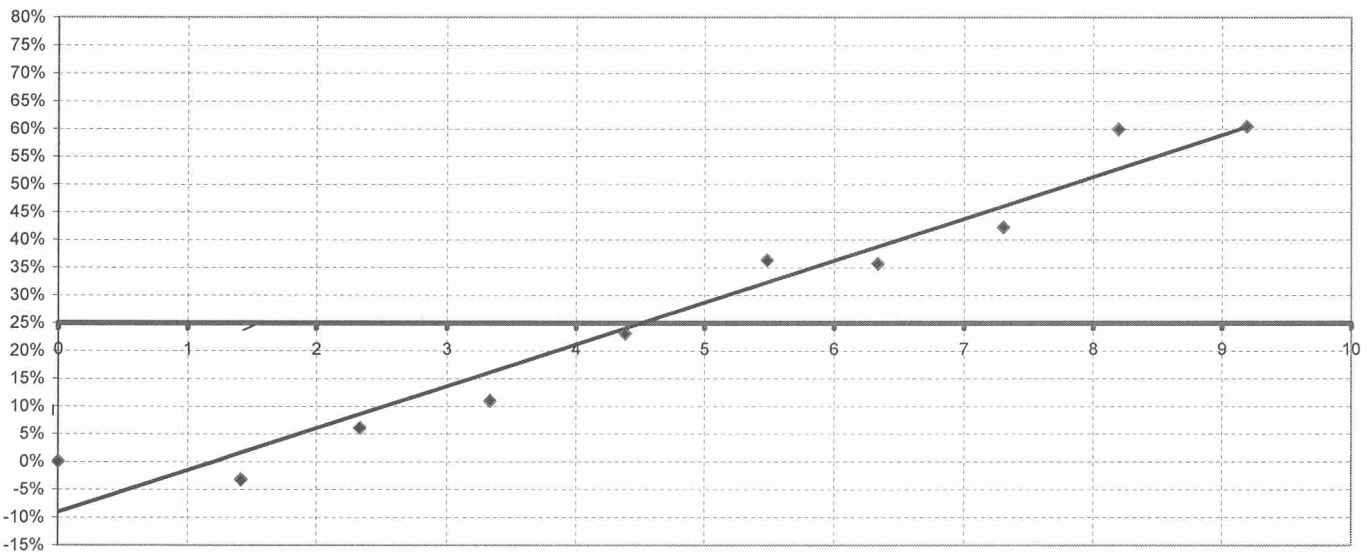
18,848

Actual Work Life:

>24 hrs

Target Work Life:

18.6 hrs

Completed by: DP/HSH

**WORK LIFE BY VISCOSITY
TEST REPORT FORM**

Material: 967-1
 Lot #: 042F003850 +40°C

hrs.

Date	Time	Viscosity Reading	Viscosity (cps)	RPM
1-30-93	INIT.	15,078		
	1	14,582		
	2	15,990		
	3	16,735		
	4	18,558		
	5	20,541		
	6	20,463		
	7	21,457		
	8	24,109		
	9	24,192		
	10	26,1927		

Tested from: Jar Syringe Syringe Size _____ cc

Completed by: _____

ATM-0087

Date: 9/3/02

Rev: 1

WORK LIFE BY VISCOSITY

Extrapolation Template for Work Life Calculation

 FREEZED THAWED FRESHDATE: 1/30/2013MATERIAL: 967-1

ROOM TEMP.

BATCH 042F004460 ORIGINAL RETEST ENGR REQUEST**4 data points minimum**

Point	Date	Time Interval (hr)	Viscosity (cps)	% Increase	Tech.	Comments
1	1/30/13 5:37 AM	0.00	13836	0.0%	HSH	
2	1/30/13 6:51 AM	1.23	14167	2.4%	HSH	
3	1/30/13 7:41 AM	2.07	14001	1.2%	HSH	
4	1/30/13 8:40 AM	3.05	14333	3.6%	HSH	
5	1/30/13 9:43 AM	4.10	15078	9.0%	HSH	
6	1/30/13 10:46 AM	5.15	14415	4.2%	HSH	
7	1/30/13 11:41 AM	6.07	14747	6.6%	HSH	
8	1/30/13 12:35 PM	6.97	15741	13.8%	DP	
9	1/30/13 1:38 PM	8.02	14913	7.8%	DP	
10	1/30/13 2:40 PM	9.19	15741	13.8%	DP	

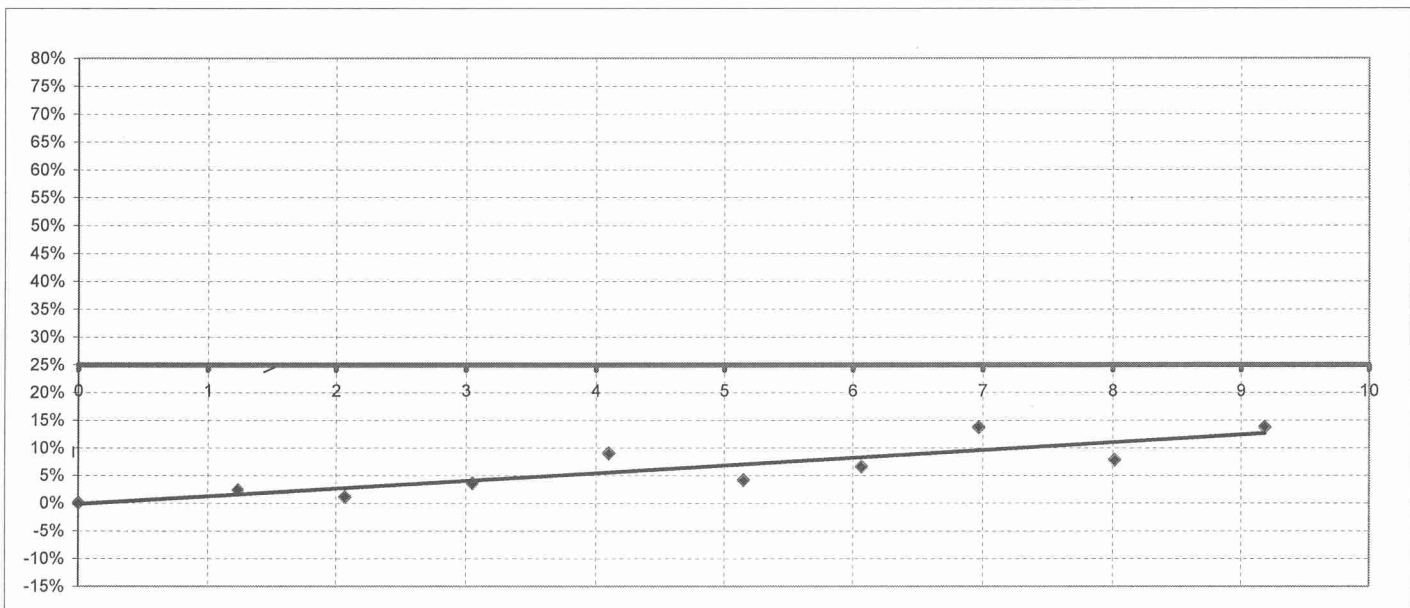
Maximum Viscosity:

17,295

Actual Work Life:

>24 hrs

Target Work Life:

18.6 hrsCompleted by: DP/HSH

**WORK LIFE BY VISCOSITY
TEST REPORT FORM**

Material: 967-1
 Lot #: 042L004460 Ram Tera

Date	Time	Viscosity Reading	Viscosity (cps)	RPM
1-30-93	INIT.	13,836		
	1	14,167		
	2	14,001		
	3	14,333		
	4	15,078		
	5	14,415		
	6	14,747		
	7	15,741		
	8	14,913		
	9	15,741		
	10	16,155		

Tested from: Jar Syringe Syringe Size _____ cc

Completed by: _____

ATM-0087

Date: 9/3/02

Rev: 1

WORK LIFE BY VISCOSITY

Extrapolation Template for Work Life Calculation

 FROZEN THAWED FRESHDATE: 1/30/2013MATERIAL: 967-1BATCH 042F004460+40C ORIGINAL RETEST ENGR REQUEST**4 data points minimum**

Point	Date	Time Interval (hr)	Viscosity (cps)	% Increase	Tech.	Comments
1	1/30/13 5:37 AM	0.00	13836	0.0%	HSH	
2	1/30/13 6:46 AM	1.15	13836	0.0%	HSH	
3	1/30/13 7:45 AM	2.13	15493	12.0%	HSH	
4	1/30/13 8:45 AM	3.13	16155	16.8%	HSH	
5	1/30/13 9:47 AM	4.17	17729	28.1%	HSH	
6	1/30/13 10:54 AM	5.28	21209	53.3%	HSH	
7	1/30/13 11:45 AM	6.13	22700	64.1%	HSH	
8	1/30/13 12:40 PM	7.05	23280	68.3%	DP	
9	1/30/13 1:42 PM	8.08	25682	85.6%	DP	
10	1/30/13 2:49 PM	9.19	29163	110.8%	DP	

Maximum Viscosity:

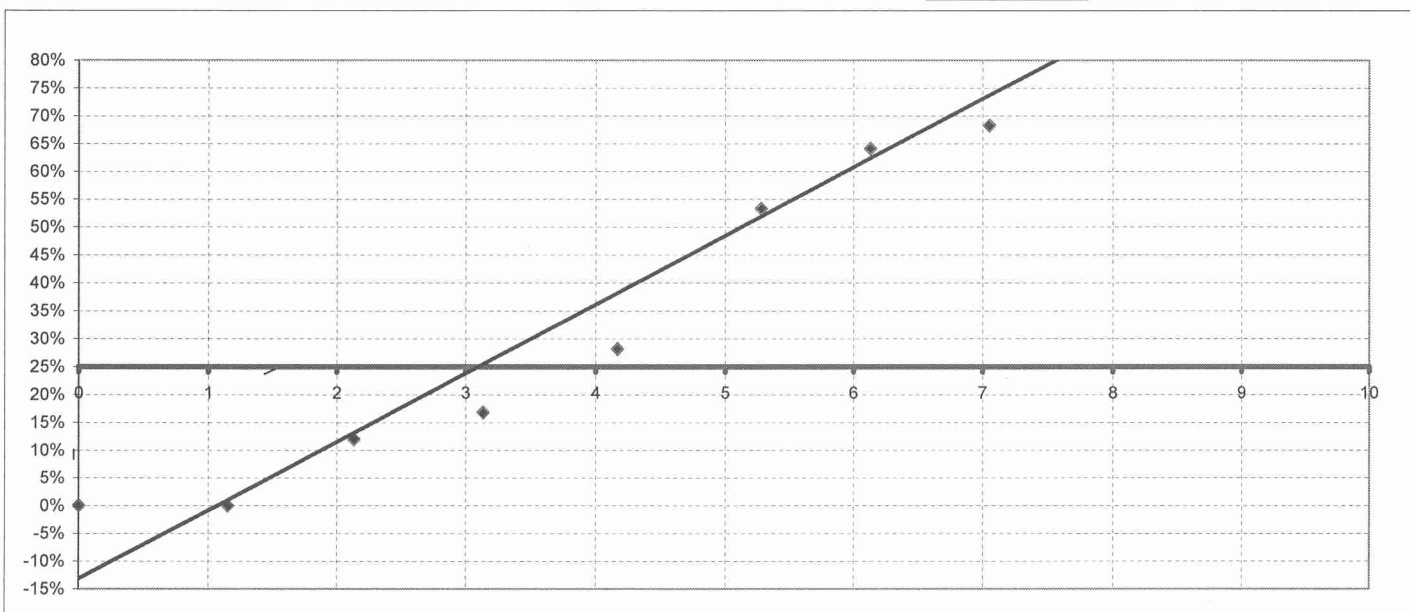
17,295

Actual Work Life:

>24 hrs

Target Work Life:

18.6 hrs

Completed by: DP/HSH

**WORK LIFE BY VISCOSITY
TEST REPORT FORM**

Material: 967-1
 Lot #: 0422004460 + 40C

hws

Date	Time	Viscosity Reading	Viscosity (cps)	RPM
1-30-93	INIT.	13,836		
	1	13,836		
	2	15,493		
	3	16,155		
	4	17,729		
	5	21,209		
	6	22,700		
	7	23,220		
	8	25,682		
	9	29,163		
	10	35,790		

Tested from: Jar Syringe Syringe Size _____ cc

Completed by: _____