

# LINQTAPE™ PET1S-Series

1 mil polyester film with silicone adhesive



+ **PRESSURE SENSITIVE SILICONE ADHESIVE**

+ **LEAVES ZERO TO LOW RESIDUE**

+ **HIGH INITIAL ADHESION**



## PRODUCT DESCRIPTION

Masking tape of 1 mil thick polyester film backing with pressure sensitive silicone adhesive.



## PRODUCT APPLICATION

Used for splicing, masking and temporary bonding applications in a.o. the printed circuit board (PCB) industry



## PRODUCT FEATURES

Low/no residue tape with high initial adhesion. No degradation in presence of most chemicals. Can be used in applications up to 204°C (400°F).



## PRODUCT DESCRIPTION

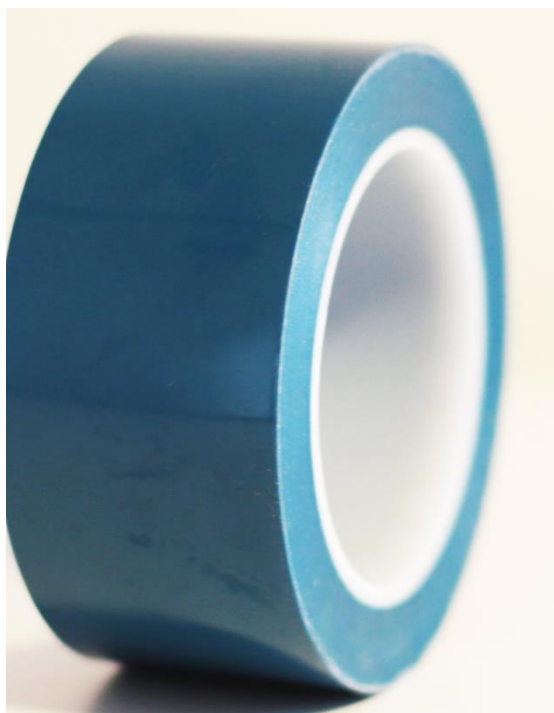
**LINQTAPE™ PET1S** is a 1-mil polyester film backing with a pressure sensitive silicone adhesive system. PET1S polyester tape is a no/low residue tape designed for splicing and masking applications where high initial adhesion is required, but no residue once the tape is removed.

**LINQTAPE™ PET1S** is a high performance, flexible, polyester tape used in a wide range of applications. For very high temperature applications, polyimide tape should be used, but for applications with temperatures up to 204°C (400°F), PET1S can be used. These applications include but are not limited to splicing, masking and temporary bonding.

**LINQTAPE™ PET1S** comes in 66 meter (72 yard) rolls of varying widths and is available in blue, yellow, red and green. LINQTAPE PET-S polyester films with silicone adhesive are available in a range of thicknesses, starting from 1 mil (25.4µm) thickness and up. Custom thicknesses are available upon request.



## PRODUCT APPLICATION



### ► Features & Applications

- High performance adhesive does not degrade in the presence of most chemicals and fumes
- No adhesive residue after removal
- Used in masking applications in the printed circuit board industry
- Used for splicing applications on difficult to bond to surfaces, such as photosplicing
- Powder coating and E-coating
- Anodizing



## PRODUCT FEATURES

TYPICAL PROPERTIES	UNIT	VALUE
Color		Blue, Yellow, Red, Green
Adhesion Type		Silicone
Film (Backing) Thickness	µm (mil)	25.4 µm (1 mil)
Adhesive Thickness	µm (mil)	43.2 µm (1.7 mil)
Total Thickness	µm (mil)	68.6 µm (2.7 mil)
Peel Strength	N/25mm oz/in	7.0 30.0
Tensile Strength	N/25mm lbs/in	133.5 25.0
Elongation	%	>100
Dielectric Strength	Volts	>4200
Insulation Class		180 (H)
Temperature Resistance	°C °F	204 400

### ▶ PRODUCT CROSS-SECTION



**A** Polyester Film: 25.4 µm

**B** Silicone Adhesive Layer: 43.2 µm

### ▶ PRODUCT NOMENCLATURE

**PET:** Polyester Tape

**1:** 1-mil Backing Thickness

**S:** Silicone Adhesive

## STORAGE AND HANDLING

**LINQTAPE™ PET1S-Series** is supplied in rolls and should be kept in a cool (10°C – 25°C) dry place (40% – 75% humidity) away from direct sunlight or temperature extremes. Once removed from packaging it should be protected against dust and other impurities.

## DATA RANGES

The data contained herein may be reported as a typical value and/or range values based on actual test data and are verified on a periodic basis.

The above figures are typical material properties only and are not to be used for product specification purposes. To generate a specification for this product, please contact our Quality Manager and request a copy of the current stock specification. The information and recommendations supplied in this document are believed to be accurate but no guarantee of their accuracy is made; they are for guidance only and should not be construed as a warranty. All implied warranties are expressly disclaimed, including without limitations any warranty of merchantability and fitness for use. It is recommended that purchasers before using this product conduct their own tests to determine whether the product is suitable for their particular purposes under their own operating conditions.



### Europe & Asia

CAPLINQ Netherland  
Provincialeweg 1,  
1561KK Krommenie  
The Netherlands  
Tel : +31 (20) 893 2224

### Americas

CAPLINQ Corporation  
957 Snowshoe Crescent  
Orléans, Ontario K1C 2Y3  
Canada  
Tel : +1 (613) 482.2215

### Worldwide

[www.caplinq.com](http://www.caplinq.com)  
Email : [info@caplinq.com](mailto:info@caplinq.com)